

Item	Each	Description	Specification	Remarks
1	1	Double Strap bronze service saddle	1" CS tap	see above
2	1	1" Bronze corporation stop	CS x PJ	
3		1" Copper tubing	Type K, soft	
4	1	1" Bronze Angle meter valve	PJ x METER	
5	1	Water meter		
6	1	1" Meter coupling	1 1/2" length	
7	1	1" Bronze gate valve	FIP x FIP	
8	1	Meter Box	Armormcast	PL000485
8	1	Meter Box Cover	Armormcast	AL000484R

SAN GABRIEL COUNTY WATER DISTRICT

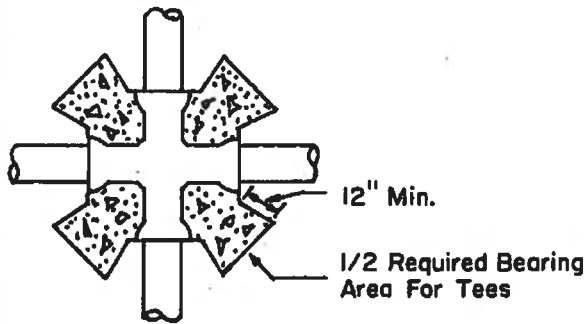
Approved

General Manager
 S.G.C.W.D. 8366 Grand Ave.
 Rosemead, California

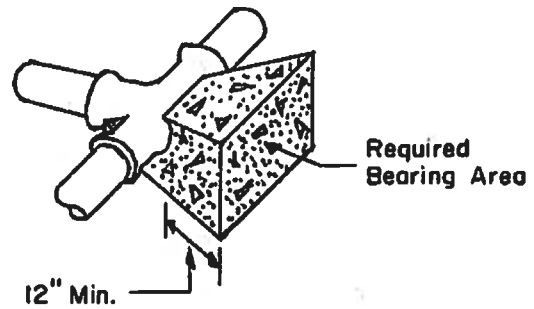
1" WATER SERVICE INSTALLATION FOR 5/8" x 3/4",
 3/4" and 1" METERS

Standard
 Dwg. No.

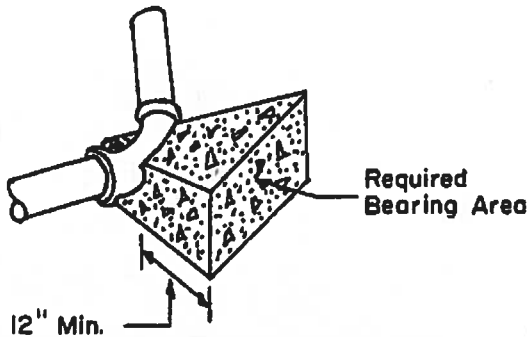
2A



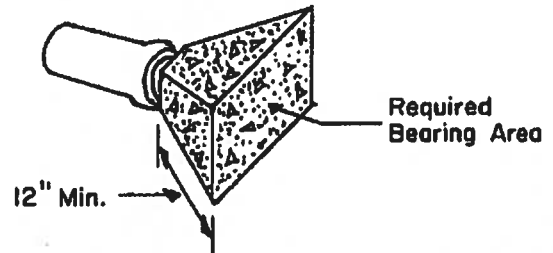
TYPICAL BLOCKING FOR CROSSES



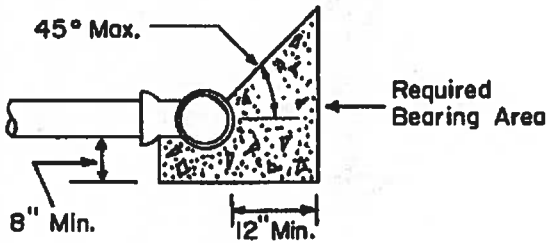
TYPICAL BLOCKING FOR TEES



TYPICAL BLOCKING FOR BENDS



TYPICAL BLOCKING FOR DEAD ENDS



TYPICAL SECTION THRU BLOCKING

Note:

Locations requiring thrust blocking shall include but not be limited to caps, plugs, tees, bends, reducers, crosses, fire hydrants, valves and curves in either the horizontal or vertical planes.

Concrete shall be "Ready Mixed" conforming to ASTM C 94, and shall be proportioned and mixed to produce a minimum 28-day compressive strength of 2000 psi.

Concrete shall be placed in such a manner that pipe, valve and fitting joints will be accessible for repair.

Concrete shall be placed between the object being braced and the undisturbed trench wall and/or bottom.

No Scale

**BEARING AREA OF CONCRETE THRUST BLOCKING (FT.²)
BASED ON SOIL BEARING VALUE OF 2000 LBS. PER FT.²**

Fitting Size	4"	6"	8"	10"	12"	14"	16"	18"	20"	24"
11 1/4° Bend	1	1	1	1.5	2	2.5	3	4	5	7
22 1/2° Bend	1	1	2	2.5	3.5	4.5	6	7.5	9.5	13.5
45° Bend	1	2	3	5	7	9	12	15	18.5	26.5
90° Bend	2	3.5	6	9	12.5	16.5	21.5	27.5	33.5	48.5
Tees	1.5	2.5	4	6.5	9	12	15.5	19.5	24	34.5
Dead End	1.5	2.5	4	6.5	9	12	15.5	19.5	24	34.5

SAN GABRIEL COUNTY WATER DISTRICT

Approved

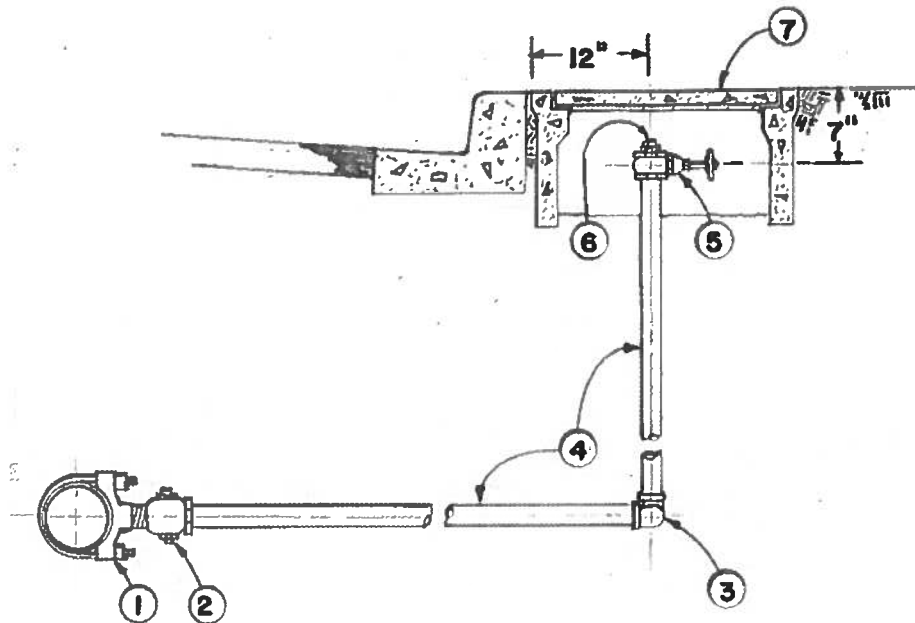
General Manager
S.G.C.W.D. 8366 Grand Ave.
Rosemead, California

Typical Concrete Thrust
Blocks

Standard
Dwg. No.

4-A

3/86



Not to Scale

Item	Each	Description	Specification	Remarks
1	1	Service Saddle	Dbl. Strap w/CS Tap	
2	1	Bronze Corporation Stop	CS inlet x FIP outlet	
3	2	Galvanized 90° Elbow		
4		Galvanized Std. Steel Pipe	Schedule 40	
5	1	Bronze Gate Valve	Ohio Brass No. 2500	
6	1	Galvanized Pipe Plug		
7	1	Concrete Meter Box	Brooks 66 S	

SAN GABRIEL COUNTY WATER DISTRICT

Approved

General Manager
S.G.C.W.D. 8366 Grand Ave.
Rosemead, California

2" Blowoff Valve Assembly

Standard
Dwg. No.

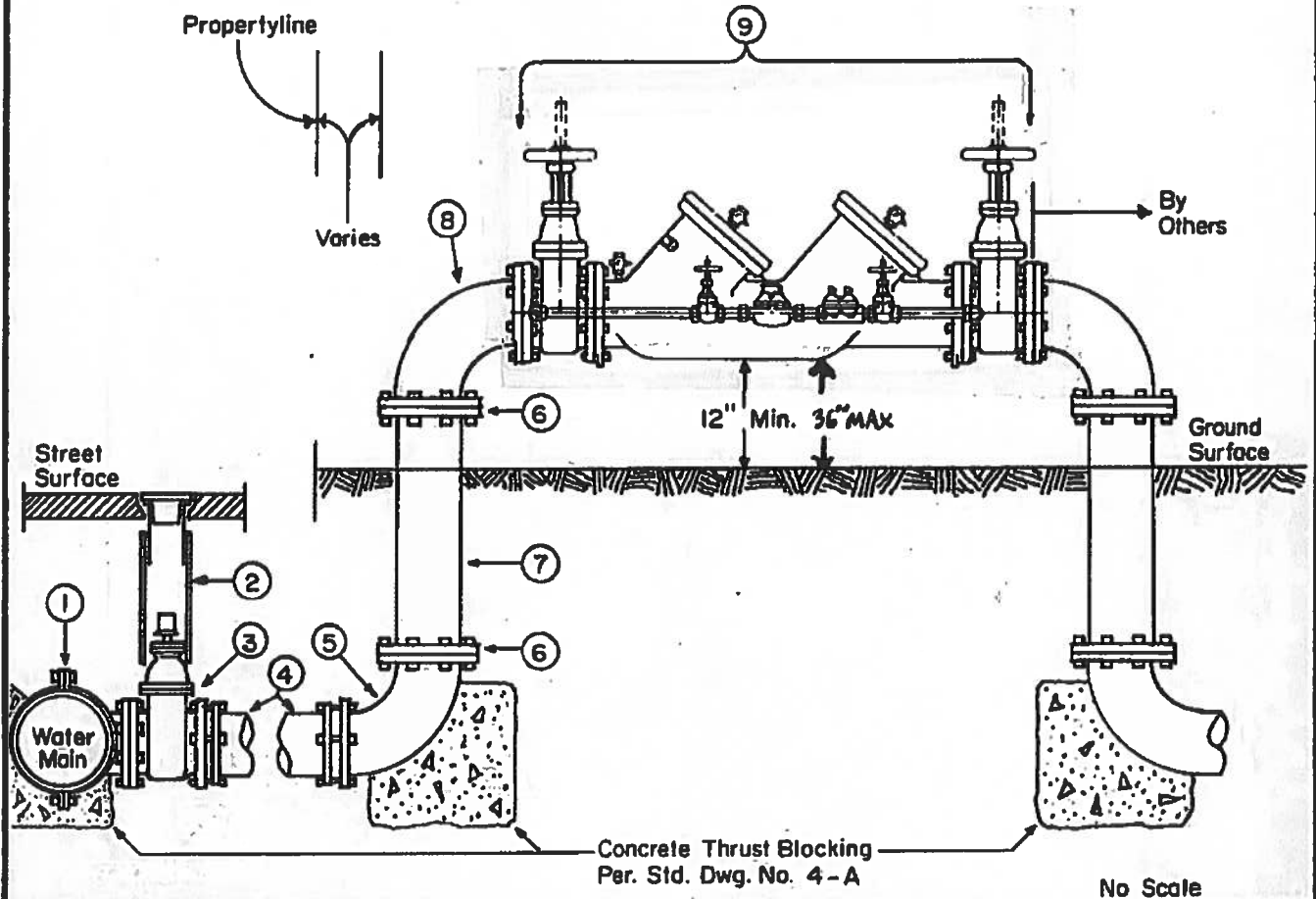
5-A

Note:

There shall be no connection between this fire protection system and any other water system on the customers premises.

Adequate clearance must be provided to permit testing and repair work.

Sizes 4" and larger should have additional support.



Item	Each	Description	Specification	Remarks
1	1	Tapping Steeve	Stainless Steel	
2	1	Valve Box Assembly	Per Std. Dwg. No. 9-A	
3	1	Tapping Gate Valve	AWWA Std. C500-80	
4		Ductile Iron Pipe	Cl. 50, Tyton Joint, CL	Length Varies
5	1	C.I. 90° Ell, Flg. x MJ	Cement Lined (CL)	
6	2	Slip-On Weld Flange	8-Hole, 150lb.	
7		Steel Pipe Riser	Sch. 40, CL	Field Fit
8	1	C.I. 90° Ell, Flanged	CL	
9	1	Double Check Valve Assembly	STATE OF CA APPROVED	

SAN GABRIEL COUNTY WATER DISTRICT

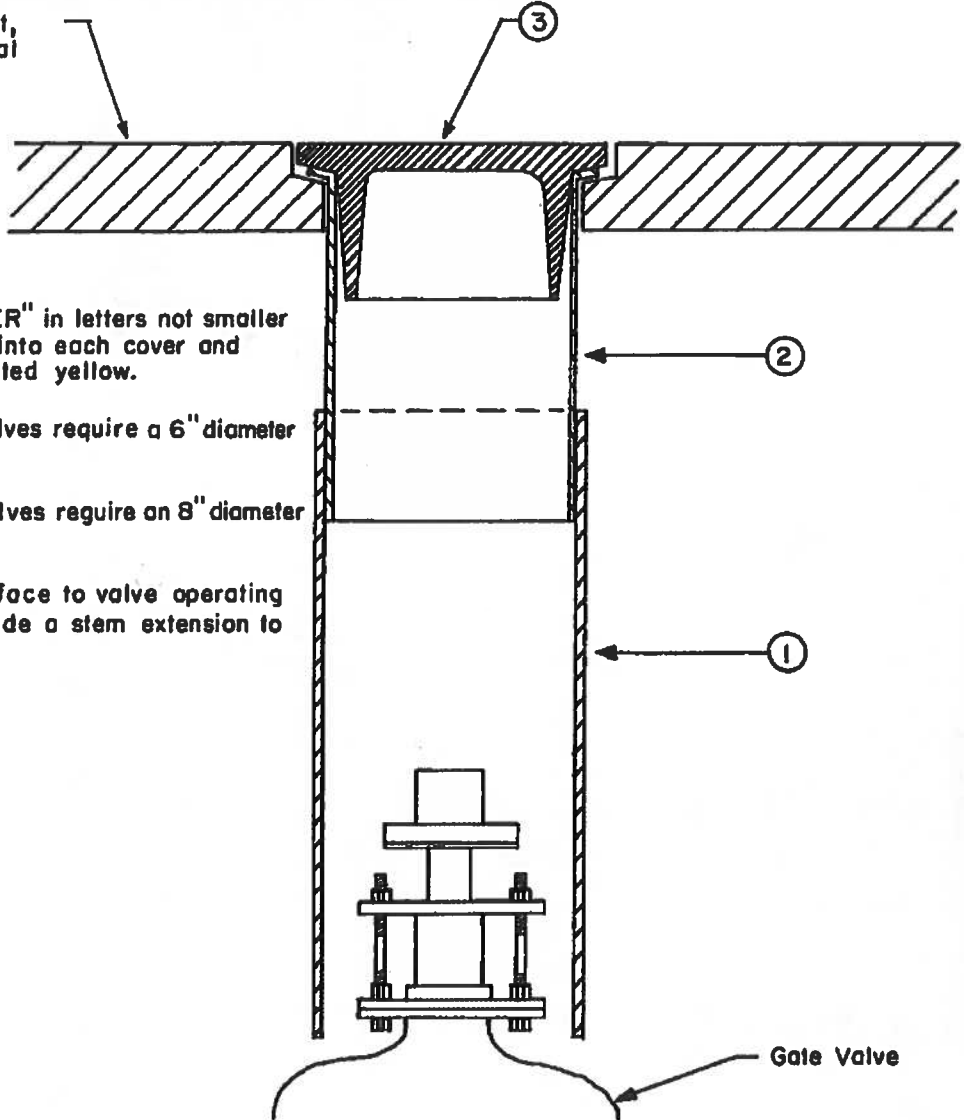
Approved

Charles S. Shaver
 General Manager
 S.G.C.W.D. 8366 Grand Ave.
 Rosemead, California

Typical Fire Service Installation Using A
 Double Check Valve Assembly, 4" and
 Larger

Standard
 Dwg. No.
 6-E

Finished Pavement,
Sidewalk or Natural
Ground Surface



Note:

The designation "WATER" in letters not smaller than 1" shall be cast into each cover and the top shall be painted yellow.

6" and smaller gate valves require a 6" diameter valve box assembly.

8" and larger gate valves require an 8" diameter valve box assembly.

If the depth from surface to valve operating nut exceeds 48" provide a stem extension to 30" below surface.

No Scale

Item	Each	Description	Specification	Remarks
1	1	Valve Box Bottom Section, Length - 30" or 36"	Galvin. 20 Ga. Steel	
2	1	Valve Box Top Section, Length - 12" or 18"	Galvin. 20 Ga. Steel	
3	1	Valve Box Cover, Marked WATER	Cast Iron	

SAN GABRIEL COUNTY WATER DISTRICT

Approved

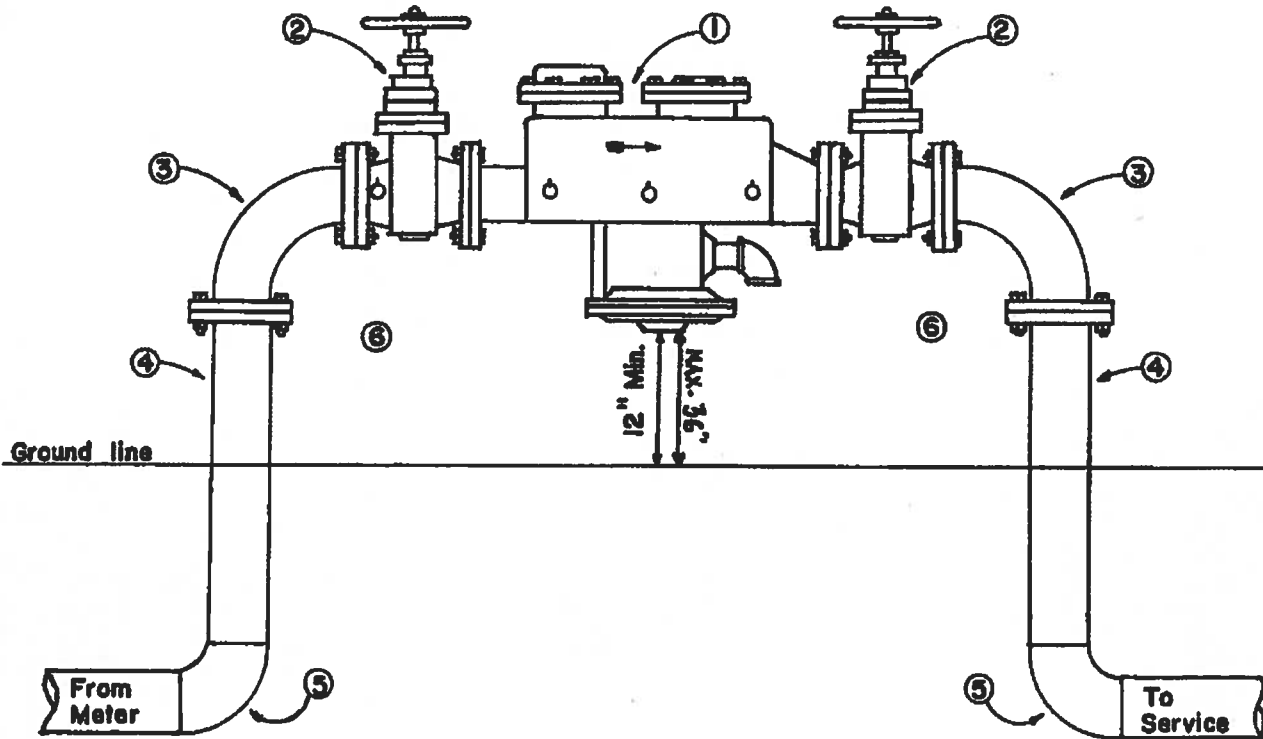
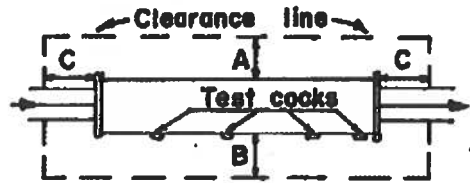
General Manager
S.G.C. W. D. 8366 Grand Ave.
Rosemead, California

Typical Valve Box
Assembly

Standard
Dwg. No.
9-A
3/86

Adequate clearance must be provided to permit testing and repair work

Minimum clearance			
Size	A	B	C
1" - 3"	12"	18"	12"
4" & up	24"	24"	12"



NOTE:

NO connections are to be made between meter and backflow prevention device. All backflow prevention devices will be tested and repaired, when necessary, by a certified tester annually. Sizes 3" and larger should have additional support.

Item	Each	Description	Specification	Remarks
1	1	Reduced pressure principle backflow prevention device	Must be approved type	See listing
2	2	Gate valve		
3	2	90° Elbow		
4	2	Riser		
5	2	90° Elbow		
6		Flange		

SAN GABRIEL COUNTY WATER DISTRICT

Approved
Carl J. Shaw
 General Manager
 S.G.C.W.D. 8366 Grand Ave.
 Rosemead, California

REDUCED PRESSURE PRINCIPLE BACKFLOW PREVENTION DEVICE

Standard
 Dwg. No.